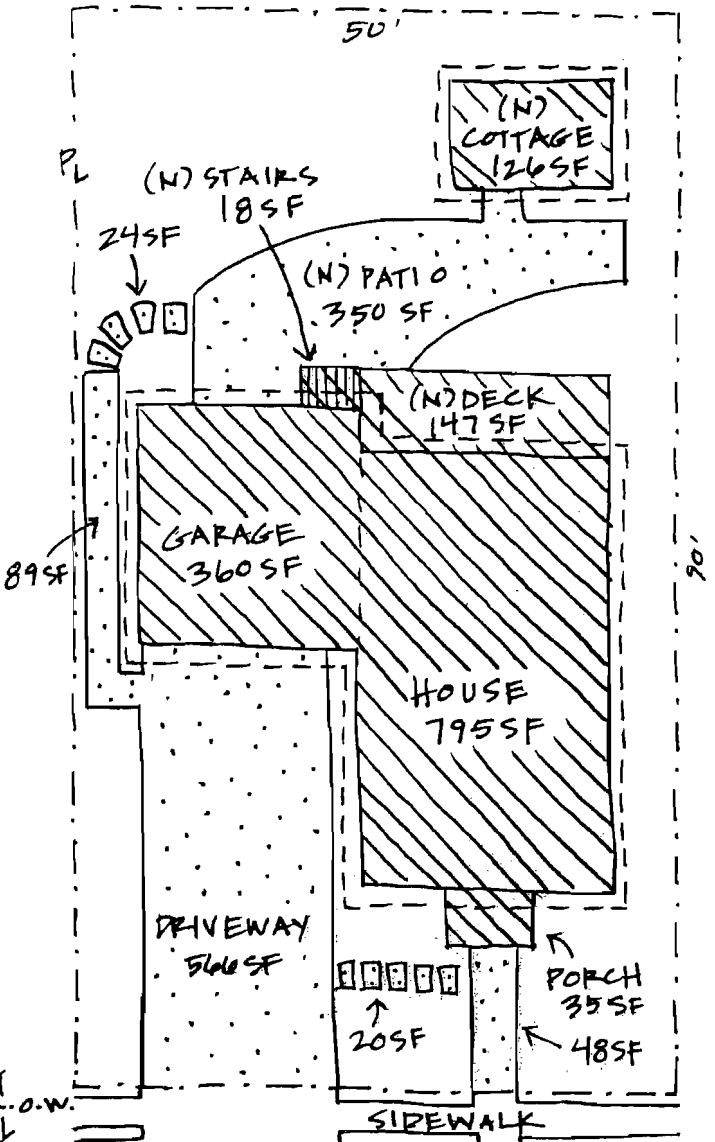
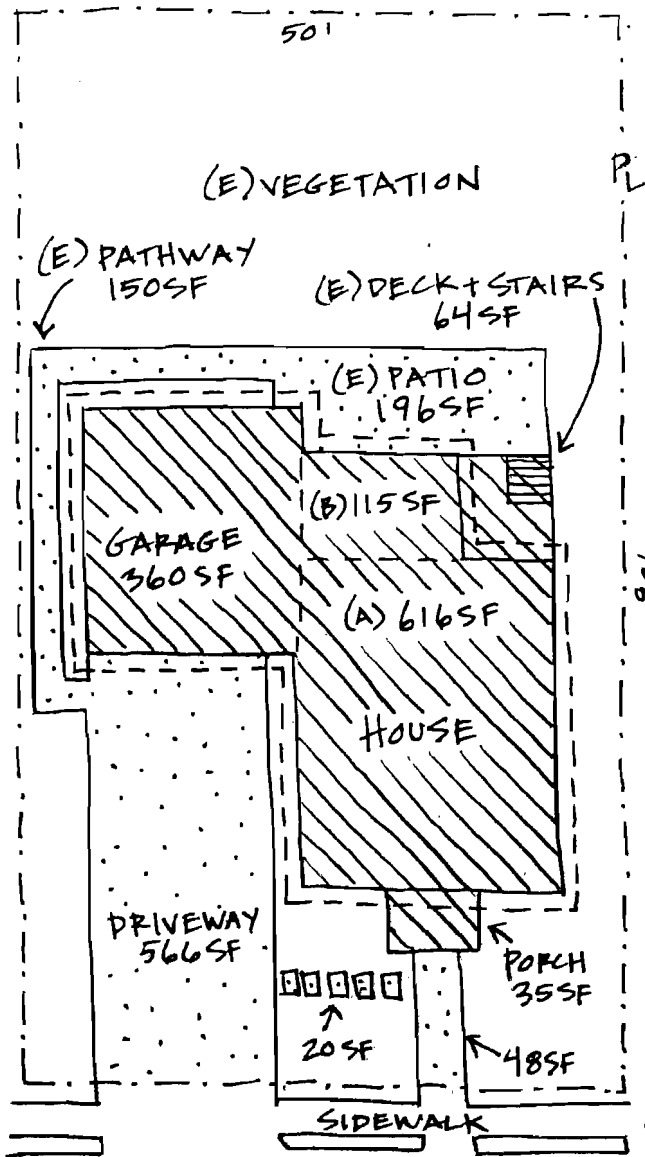


CALCULATIONS FOR 100 MAIN STREET

1" = 16'



LOT SIZE = 4500 SF

EXISTING

(E) STRUCTURE	Area
HOUSE (A)	616 SF
HOUSE (B)	115 SF
GARAGE	360 SF
DECK + STAIRS	64 SF
PORCH	35 SF
TOTAL	1,190 SF = 26.4%

(E) IMPERVIOUS	Area
TOTAL STRUCTURE	1,190 SF
DRIVEWAY	566 SF
FR. PATHWAY	48 SF
STEP. STONES	20 SF
PATHWAY	150 SF
PATIO	196 SF
TOTAL	2,170 SF = 48.2%

PROPOSED

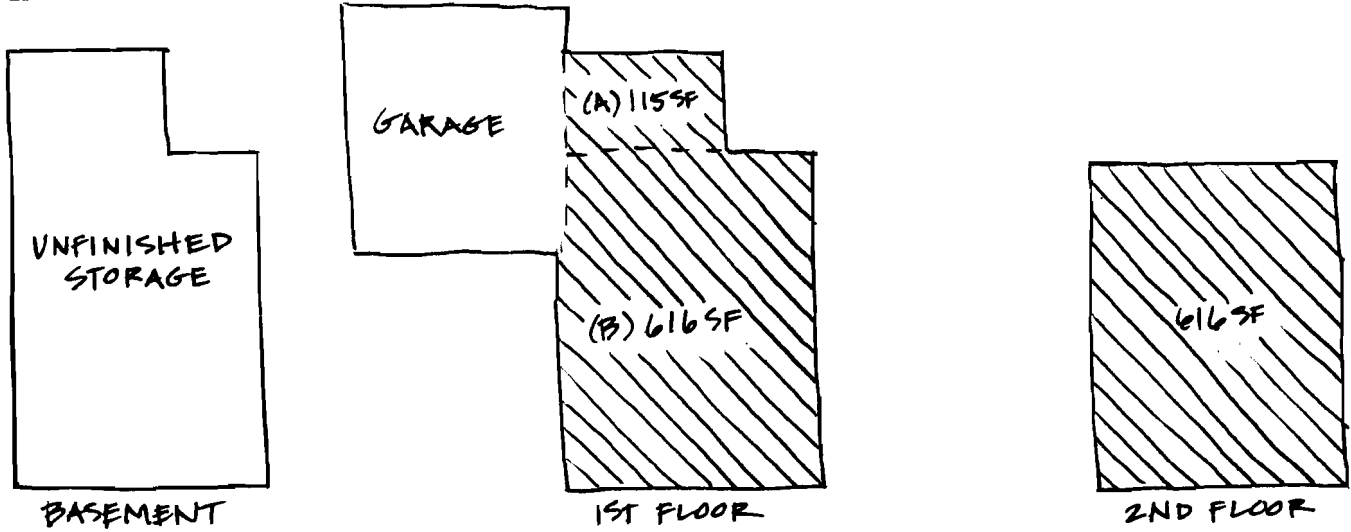
(P) STRUCTURE	Area
HOUSE	795 SF
GARAGE	360 SF
DECK	147 SF
STAIRS	18 SF
PORCH	35 SF
COTTAGE	126 SF
TOTAL	1,481 SF = 32.9%

(P) IMPERVIOUS	Area
TOTAL STRUCTURE	1,481 SF
DRIVEWAY	566 SF
FR. PATHWAY	48 SF
FR. STEP. STONES	20 SF
PATHWAY	89 SF
BACK STEP. STONES	24 SF
PATIO	350 SF
TOTAL	2,578 SF = 57.3%

CALCULATIONS FOR 100 MAIN STREET (CONT.)

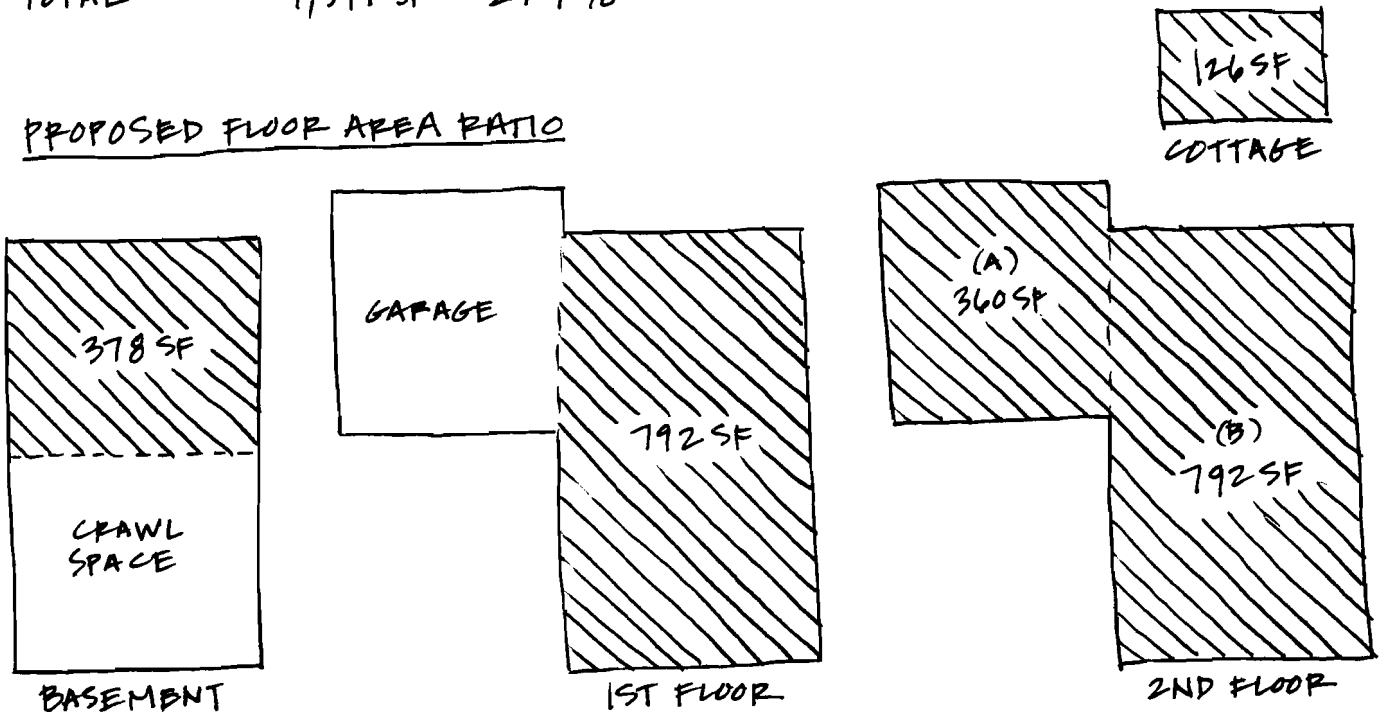
1" = 16'

EXISTING FLOOR AREA RATIO



BASEMENT	0 SF
1ST FLOOR (A)	115 SF
1ST FLOOR (B)	616 SF
2ND FLOOR	616 SF
TOTAL	1,347 SF = 29.9%

PROPOSED FLOOR AREA RATIO



BASEMENT	378 SF
1ST FLOOR	792 SF
2ND FLOOR (A)	360 SF
2ND FLOOR (B)	792 SF
COTTAGE	126 SF
TOTAL	2,448 SF = 54.4%